

HUAWEI E3272

Quick Start Manual

APAC MODEMS

<http://stores.ebay.com/apac-modems>

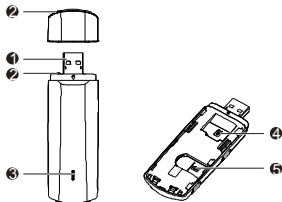
Thank you for choosing the Mobile Broadband USB-Modem (Dongle). With your USB-Modem, you can access a wireless network at high speed.

Note:

This manual describes the appearance of the USB-Modem, as well as the procedures for preparation, installation, and removal. For operation details about the management program, see the online help included in the management program.

Getting to Know Your USB-Modem

The following figure shows the appearance of the USB-Modem. It is provided only for your reference. The actual product may be different.

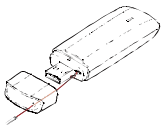


1 USB Connector

It connects the USB-Modem to a PC.

2 Strap Hole

You can tie the cap and the USB-Modem together by threading a strap through the strap holes, so that the cap will not be easily lost.



③ Indicator (LED)

It indicates the status of the USB-Modem.

- Green, blinking twice every 2s: The USB-Modem is powered on.
- Green, blinking once every 0.2s: The software of the USB-Modem is being upgraded.
- Green, blinking once every 2s: The USB-Modem is registering with a 2G network.
- Cyan, blinking once every 2s: The USB-Modem is registering with a 3G/3G+ network.

- Blue, blinking once every 2s: The USB-Modem is registering with a 4G network.
- Green, solid: The USB-Modem is connected to a 2G network.
- Cyan, solid: The USB-Modem is connected to a 3G/3G+ network.
- Blue, solid: The USB-Modem is connected to a 4G network.
- Off: The USB-Modem is removed.

④ SIM Card Slot

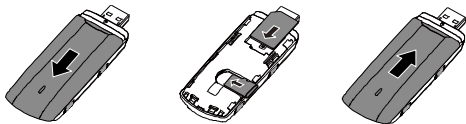
It holds a SIM-card (Subscriber Identity Module).

⑤ microSD Card Slot

It holds a microSD Memory-card.

Getting Started

1. Slide the cover off.
2. Insert the SIM card and the microSD card (optional) into the corresponding card slots, as shown in the following figure. The SIM-card with the golden contact facing down.
3. Slide the cover back onto the USB-Modem until it snaps into place.



Notes:

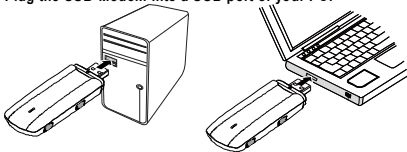
- The microSD card is an optional accessory. If it is not provided in the package, you can buy one yourself.
- Ensure that the beveled edge of the SIM card is properly aligned with that of the SIM card slot and the microSD card is inserted according to the direction as labeled on the microSD card slot.
- Do not remove the microSD or SIM card when the USB-Modem is in use. Otherwise, the card as well as your USB-Modem may get damaged and the data stored on the microSD-card may be corrupted.

Installation/Removal Guide

The procedure for installing the management program depends on the operating system (OS) installed on your PC. The following sections take Windows XP as an example.

Connecting the USB-Modem to a PC

Plug the USB-Modem into a USB port of your PC.



Installing the USB-Modem Management Program

1. Connect the USB-Modem with the PC.
2. The OS automatically detects and recognizes the new hardware and automatically starts the installation wizard.

Note:

If the installation does not start automatically: Choose "Start", then "Execute" and type after 'open': E:\AutoRun.exe and click on "OK".

E: stands for the name that your PC has given to the USB-Modem. This can be for example also D: or F:.

3. Follow the on-screen instructions of the installation wizard.
4. After the program is installed, a shortcut icon for the management program appears on the desktop.

Starting the Management Program

After being installed, the management program starts automatically. Then every time the USB-Modem is connected to the PC, the management program starts automatically.


You can also double-click the shortcut icon on the desktop to start the management program.

The management program will then ask for the PIN-code of the inserted SIM-card. For a standard (new) SIM-card this PIN is default **0000**.

Connecting the Internet

Click on the "Connect" button to make a connection to the Internet. Now the Internet browser can be started.

Removing the USB-Modem

1. Double-click  in the notification area. Then the Unplug or Eject Hardware dialog box appears.
2. Select the corresponding hardware and then click Stop.
3. When the message "It is safe to remove the device" appears, remove the USB-Modem.

Uninstalling the Management Program

1. Choose **Start > Control Panel > Add or Remove Programs**.
2. Find the management program and click Remove to uninstall the management program.

Note:

Exit the management program before uninstalling it.